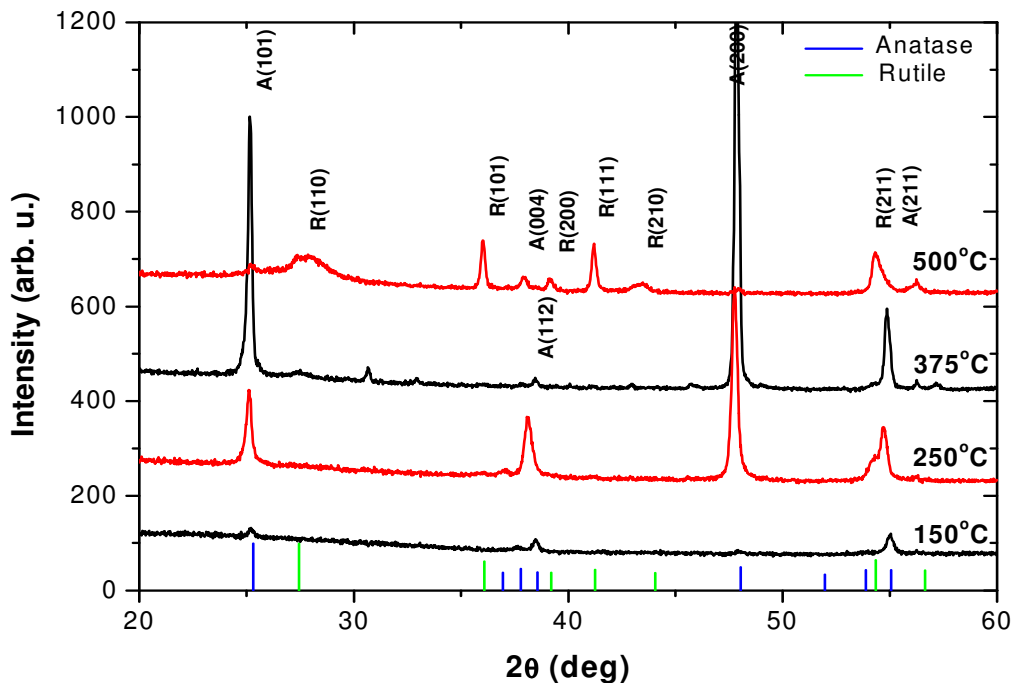


The influence of process temperature on the samples has been investigated. Main conclusions are:

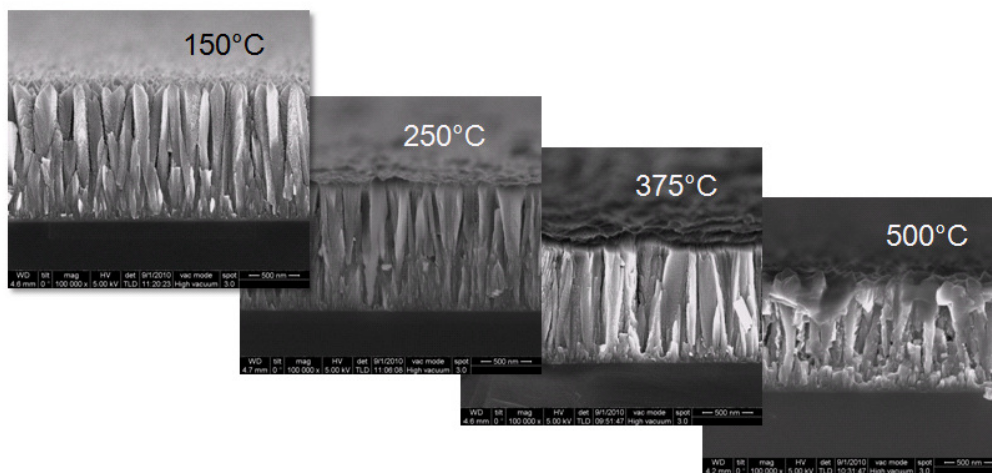
- **Anatase TiO<sub>2</sub> formed at temperatures below 250 °C**
- **Crystallinity improves significantly with higher temperatures**
- **Above 350 °C the rutile phase appears and is favored at higher temperatures**



X-ray diffraction (XRD) of a TiO<sub>2</sub> layer. Anatase TiO<sub>2</sub> is formed below 250 °C. This opens for a wide range of applications.

Scanning Electron Microscopy TiO<sub>2</sub> layer cross section. A melt down of the feather like structure is seen with increasing deposition temperature.

1  $\mu\text{m}$  coatings deposited at different temperatures



Increasing deposition temperature